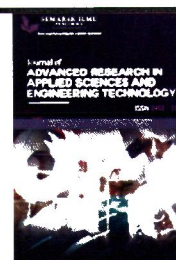




Journal of Advanced Research in Applied Sciences and Engineering Technology

Journal homepage:
https://semarakilmu.com.my/journals/index.php/applied_sciences_eng_tech/index
ISSN: 2462-1943



HYBRID MULTILAYER PERCEPTRON NEURAL NETWORK FOR TRANSFORMER HEALTH INDEX MONITORING

AFZAN ZAMZAMIR, NAZRUL FARIQ MAKMOR, AZHARUDIN MOKHTARUDDIN, JA'AFAR ADNAN, ARDITA SEPTIANI, YULNI JANUAR

- ¹ Faculty of Engineering, National Defence University of Malaysia, Sg. Besi Camp, 57000 Kuala Lumpur, Malaysia
- ² National Research and Innovation Agency Republic of Indonesia, Gedung B.J. Habibie, Jl. M. H. Thamrin No. 8, Jakarta Pusat 10340, Indonesia
- ³ Toshiba Transmission & Distribution Systems Asia Sdn Bhd, Taman Sains Selangor 1, Kota Damansara, Petaling Jaya, 47810 Petaling Jaya, Selangor, Malaysia

ARTICLE INFO

ABSTRACT

Article history:

Received
Received in revised form
Accepted
Available online

Keywords:

Transformer; Dissolve gas analysis; Key gas method; Multilayer perceptron

Dissolve Gas Analysis (DGA) for transformers is used to differentiate between a transformer in good condition or the one which needs to schedule for maintenance. The main goal of DGA is to identify more precisely problems caused by the various gas formations in the transformer and encountered. Key Gas Method (KGM) analysis is one of the DGA's techniques often used. KGM is used in forecasting the health index of the transformer based on formational of gases in transformer. In the research, several classifiers are arranged to obtain the best performance based on four (4) configuration factors. The hybrid multilayer perceptron (HMLP) network, multilayer perceptron (MLP) network, K-Nearest Neighborhood (KNN), Linear Discriminant Analysis (LDA) and Support Vector Machine (SVM) are used to do the classification. The HMLP network outperform other classifier with 92.35% on accuracy and 0.78 on the MSE, respectively. Three different training algorithms selected to train HMLP with Backpropagation (BP), Lavenberg Marquardt (LM) and Bayesian Regularization (BR) training algorithms. At the end simulation, BR training algorithm shows the best performance with accuracy of 94.13% and 0.39 on MSE, respectively.

1. Introduction

Power transformers are the most valuable assets in a power grid, and as a result, they account for a significant portion of the total investment in a power delivery system. Due to the fact that a malfunctioning transformer that leads to malfunctions might result in a power outage, which can result in plant owners experiencing significant financial losses as a result of the inability to produce energy, planned observations and general maintenance are required as preventive action consideration [1-2]. In addition, faulty transformers would result in potentially hazardous conditions, such as noise pollution, power loss, and combustion, all of which would discharge smoke from the transformers. Therefore, guaranteeing the health of a transformer in the event that it fails to function properly can lead to a big issue.

Power transformers are working at levels of load that are reaching perilously close to their nominal limitations as a result of the continual growth in demand for load, which makes it more probable that the transformers may collapse or fail to deliver the operation. The use of a neural network to address the issue of health monitoring for power transformers is the primary focus of this research. Therefore, discovering the issue with the transformer as quickly as possible is essential in order to maintain the maximum possible balance between the expenses of maintenance, the costs of making capital expenditures, and the costs of maintaining a safe working environment [3].

Towards the end of the 19th century, calculating the health index (HI) evolved into a procedure that is proving to be more helpful than ever before when it comes to determining the condition of transformers. The health index, referred to as the HI, is a method that is quick and accurate for determining the condition of power transformers by considering various parameters. The HI was arrived at by considering and combining several different elements during the process. These contained information describing a transformer's current and other test results, expert opinions, and data gathered from field inspections. In order to reduce costs, it is vital to cut down on the number of required experiments that must be performed. For the goal of HI prediction, artificial neural networks (ANN) are used, and the feature-based exhaustive technique is applied in order to get rid of the tests that are identified to be the least significant [4].

Nowadays, the rapid development of computer science and data processing has led to the creation of new HI approaches for the analysis of huge data that are based on machine learning algorithms. These new methods have been made possible as a result of the quick pace of technological improvement [5]. An ANN-based on HI technique was explored, and it employed data from dissolved gases analysis, furan testing, and oil testing to evaluate the overall health state of several transformers already in optimum service [6]. Tenaga Nasional Berhad (TNB) has been following this technique, which entails documenting the amount of gas that is present in the transformer oil.

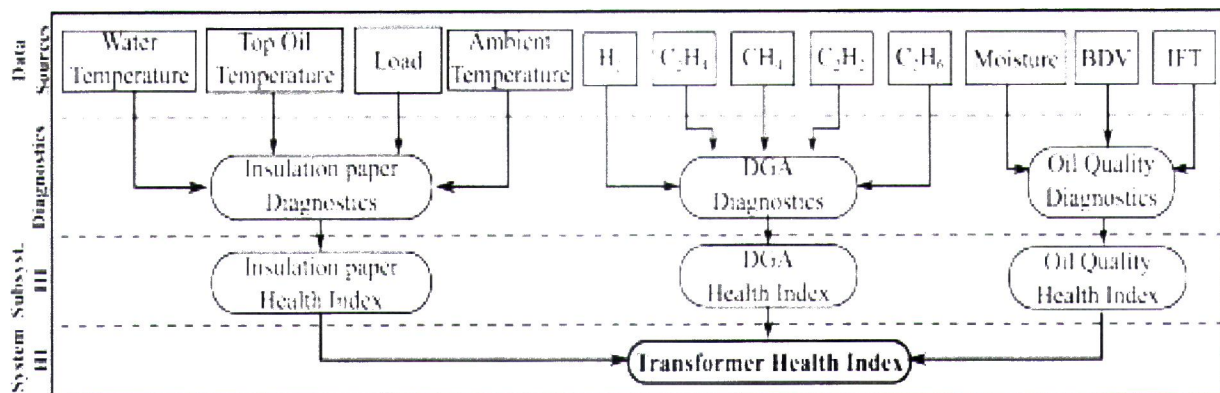
This practice has been in use for some time and was presented earlier in the discussion. After that, this oil will be taken to a laboratory, where it will be computed and examined to determine the quantity of Total Dissolve Combustible Gas (TDCG), and then the type of condition of the transformer will be determined to be either condition 1, condition 2, condition 3, or condition 4. Due to a lack of qualified specialists working for Tenaga Nasional Berhad (TNB) who are able to analyse the transformer health index, this process is fraught with difficulties and should be avoided at all costs. Because of the way that is utilised, the procedure of calculating the health index of the transformer is created to be a more difficult and time-consuming process. After that, TNB will be responsible for coordinating the annual scheduling of maintenance on transformers, which will be done on a rotating basis. This will be a constant problem for older transformers requiring preventive action. The research utilised ANN in order to monitor the power transformer health index using the data was sourced by Tenaga Nasional Berhad Research (TNBR) based on 50 transformers within Klang Valley. The data has been pre-processed and analysed from TNBR and used MATLAB Neural Network toolbox, create and stimulate the neural network to find the optimal approach for the provided data.

2. Literature Review

Generally, the transformer health index can be considered a measurement or evaluation of the state and performance of the transformer. In most cases, it requires inspecting a number of

properties, including temperature, oil quality, the condition of the insulation, winding resistance, and further diagnostic tests. By studying these characteristics, professionals and researchers are able to evaluate the overall health of a transformer as well as the remaining useful life of the device. This enables them to identify potential failures and, as a result, prepare for maintenance or replacement processes. The transformer HI is a single factor that utilises the data from operating observations, field inspections, and laboratory testing to create a valid asset management decision for transformers. According to [7], this decision may be used to keep transformers in good working order.

The identification of the variables that have the most significant impact on the transformer health index has also attracted the attention of a substantial number of researchers. The levels of the data source and diagnostics are the ones that are accountable for simulating the most important causes of uncertainty. The available data sources are influenced by measurement uncertainties, which present themselves as a range of faults including measurement and quantisation mistakes. These flaws can be found in the accessible data sources. Whether correct knowledge or stochastic uncertainties are present, modelling uncertainties have an impact on the diagnostics models that are built. This is the case regardless of which type of uncertainty is present. Fig. 1 illustrates the structure for the transformer health index that was built and implemented.



Legend: BDV: breakdown voltage; IFT: interfacial tension; DGA: dissolved gas analysis; HI: health index

Fig. 1. Transformer health index soft computing framework [8]

In addition, the effect of several uncertainty sources, which are examined across various transformer subsystems, is propagated up to the level of the transformer health index. This helps to inform the final decision-making process better and makes it appropriate for application in the context of systems surrounded by measurement and process uncertainties. Furthermore, it makes it suitable for use in the context of decision-making processes that are surrounded by uncertainty. DGA is a diagnostic method frequently used to determine whether electrical power transformers are in healthy operating condition. Taking readings and conducting studies of gas concentrations that have been dissolved in the insulating oil of a transformer is required to carry out this task. These gases are produced inside the transformer due to several faults and abnormalities on the device's interior. These flaws and irregularities can be found inside the device. The DGA is one of the diagnostic methods utilised for determining the condition of transformers regularly [9]. This is since previous experience has demonstrated that the DGA is an effective tool [10].

In the event that a transformer experiences problems such as overheating, electrical arcing, partial discharge, or deterioration of the insulation, particular gases are expelled into the oil that serves as the medium for the transformer's insulation. By evaluating the quantities and types of gases in Table 1, specialists are able to gather substantial insights into the internal condition of the transformer and identify potential problems. When analysing the concentration levels and ratios of

the gases, as well as other criteria such as the quality of the oil and the results of electrical tests, specialists are able to evaluate the overall health of the transformer, identify specific defect types, and estimate the urgency and kind of maintenance or repairs that are required.

When it comes to determining the condition of transformers [11], the DGA method is one that is both widely utilised and helpful. This is a result of the fact that it enables the early diagnosis of prospective problems, the prediction of defects, and the proactive planning of maintenance in order to avoid the risk of failures and costly downtime. Moreover, this is made possible because it can be done in real-time. A DGA is performed on the transformer as part of the standard and customary periodic maintenance to determine its age and the extent of degradation it experienced [12].

Table 1
 The most common gases analysed in DGA.

Type of Gas	Fault Type
Hydrogen (H ₂)	Elevated levels of hydrogen indicate the presence of electrical arcing, which may suggest insulation breakdown or localized overheating.
Methane (CH ₄) & Ethane (C ₂ H ₆)	These gases are typically associated with thermal and electrical faults, such as overheating of solid insulation or oil degradation.
Ethylene (C ₂ H ₄) & Acetylene (C ₂ H ₂)	These gases are primarily generated due to severe electrical faults like arcing, corona discharge, or insulation breakdown.
Carbon Monoxide (CO) & Carbon Dioxide (CO ₂)	These gases can be indicative of overheating, combustion, or ageing processes.
Oxygen (O ₂)	The presence of oxygen can suggest leakage into the transformer, which can degrade the insulation and increase the risk of further faults.

Techniques drawn from the field of artificial intelligence were utilised to arrive at an estimation of the HI of the transformers. The typical development of an ANN-based HI model resembles the timeline shown in Fig. 2, which may be found here. The application of artificial intelligence to the process of evaluating the condition of power transformers is particularly helpful for analysing large datasets related to transformers [13].

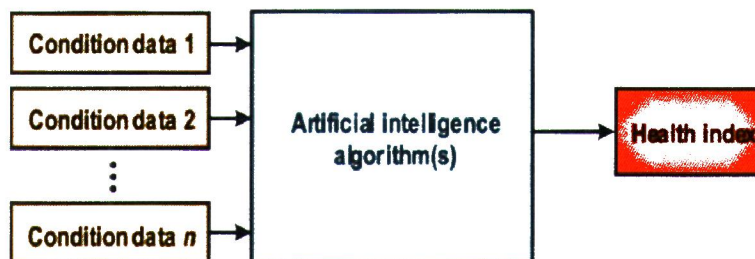


Fig. 2. Assessing transformer health index using ANN principle [13]

When calculating transformer HI, several different types of data are considered, including the transformer's age, data from operations, and data from on-site tests. According to [11], the rate at which the transformer ages is determined not only by the length of time that it has been in use but also by the amount of time that it was designed to remain in service [11]. The data from the operation of the transformer contain information on its loading as well as the level of pollution it produced. These specifics offer an indication of the primary condition of the transformer and constitute an

indispensable part of the condition assessment of the device. Furthermore, the outcomes of on-site tests are able to provide a reflection of the condition the transformer was in at the time of the test, and as a result, they are vital to the process of evaluating the condition of the transformer.

Researchers in [14], deliver a novel multi-attribute decision-making model for evaluating the condition of transformers. The model makes use of fuzzy computerization set theory, game theory, and modified evidence combination extended by D numbers. The fuzzy computerization set theory is incorporated into this paradigm. The model includes several processes, one of which is the construction of a framework for the evaluation of the current condition of the transformer. Other steps in the model include the establishment of a fuzzy membership matrix and the determination of evaluation grades. The total weight is determined through the application of game theory, and the results of the final evaluation are derived by the application of the modified evidence combination to the evidence that has been increased by D numbers [14]. The proposed model is demonstrated to be accurate by conducting an investigation on a real transformer and comparing the findings to those obtained from the established practice. According to the data, it would appear that the model is able to effectively identify the current state of health of the transformer.

Artificial neural network (ANN) is a branch of artificial intelligence as it based on brain function. Based on the principles of brain, the artificial neural network designed to resemble a brain operation such as structure building, learning techniques and operating techniques. Figure 3 shows diagram of the nonlinear neuron model. According to [15], their goal is to imitate the operation of an ANN to calculate the HI of a transformer. In order to compute the HI of the transformer, a feedforward artificial neural network was utilised alongside an actual measurement of the operational transformer. Additionally, [16-17] suggest the use of a prediction system that is founded on an algorithm for an ANN.

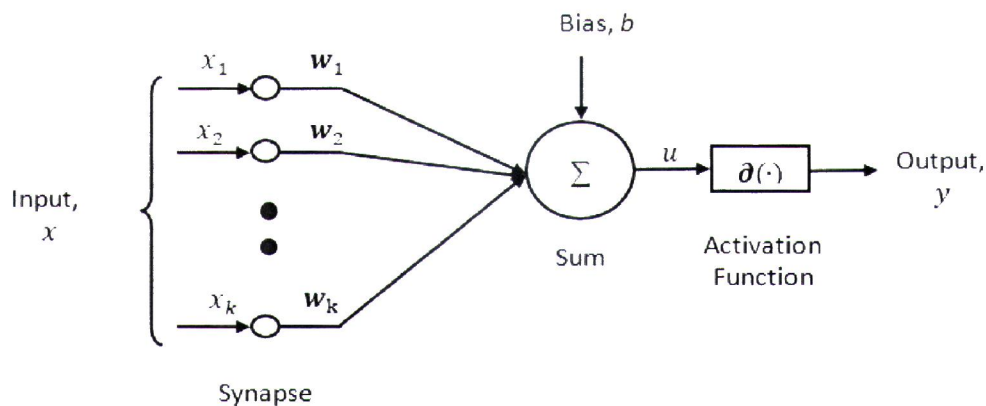


Fig. 3. Nonlinear neural model

This system, which we call distribution transformer failure prediction, would be installed on the management plane for periodic prediction based on real-time sensor traffic to our proposed cloud. This prediction would be based on data collected by our proposed cloud. This would make it possible to make forecasts on a periodic basis. Prior works utilised the ANN methodologies and fuzzy logic techniques respectively [18-20], to classify the transformer state by applying the standard condition tests. These classifications were based on the HI value.

The existence of multiple layers of units is a defining characteristic of the MLP network architecture. Every node in every layer connected to every other node in the layers below it in the completely interconnected networks that were taken into consideration [12]. An MLP is constructed from three layers: an input layer, hidden layers that are composed of hidden units, and an output layer. The output of the MLP network is given by:

$$\hat{y}_k(t) = \sum_{j=1}^{n_h} w_{jk}^2 \theta \left(\sum_{i=1}^{n_i} w_{ij}^1 x_i^0(t) + b_j^1 \right) \quad (1)$$

for $1 \leq j \leq n_h$ and $1 \leq k \leq m$

where n_h denotes hidden nodes and m denotes the number of network outputs while $\theta(\cdot)$ is the activation function with the sigmoid used to activate the MLP network. The weights are unknown, and they need to converge the optimum values to minimise the prediction error, with $y_k(t)$ being the actual output from the system while $\hat{y}_k(t)$ is the predicted output.

There have been several modified versions based on conventional MLP networks, such as the addition of a linear connection directly from the input layer to the output layer to form a new network known as HMLP network. The HMLP networks can improve the accuracy of results compared to conventional MLP networks. The ability of ANNs to make good predictions is highly dependent on the training algorithms used and the design of the structure [17]. The direct linear connection between the input and the output layers has been applied to improve the efficiency and generalization of conventional nonlinear neural networks [17-20], resulting in the HMLP network. Naturally, improved training algorithms were also sought to deal further improves performance.

An MLP neural network is a highly nonlinear functional structure that can be trained to implement a desired input-output mapping [20-21]. They also stated that using a nonlinear network, such as MLP to model a linear system will not produce an accurate prediction. To do that, HMLP network does cope well with linear systems owing to the direct input to output connections, represented by the dashed line in Fig. 4. The figure consists of a set of an input layer, a single hidden layer, and an output layer.

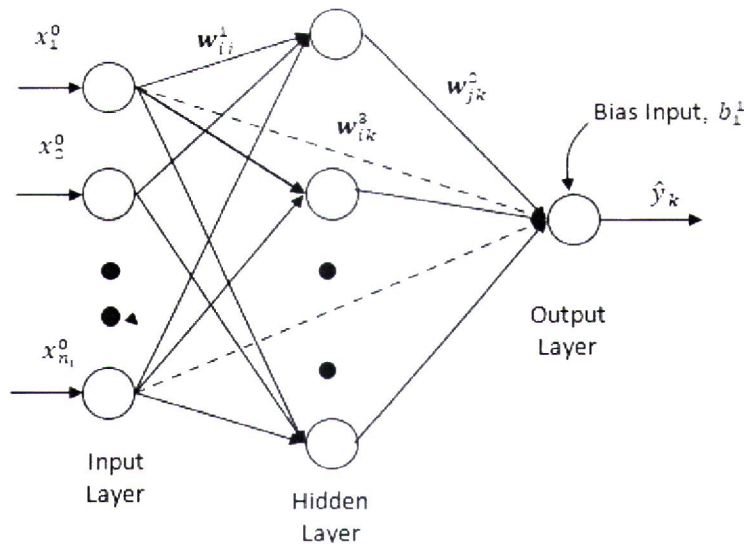


Fig. 4. HMLP architecture with one hidden layer

The output of the HMLP network is given by:

$$\hat{y}_k(t) = \sum_{j=1}^{n_h} w_{jk}^2 \theta \left(\sum_{i=1}^{n_i} w_{ij}^1 x_i^0(t) + b_j^1 \right) + \sum_{i=1}^{n_i} w_{ik}^3 x_i^0(t) \quad (2)$$

for $1 \leq j \leq n_h$ and $1 \leq k \leq m$

where w_{ik}^3 represents the weight of the additional linear connection between the input and output layers, n_h are the hidden nodes while m is the number of outputs of the network. $\theta(\cdot)$ is the activation function with the sigmoid activation function chosen to activate the HMLP network in this case. The weights $w_{ij}^1, w_{jk}^2, w_{ik}^3$, and threshold b_j^1 are unknown variables and they need to converge to optimum values to minimize the prediction error defined as:

$$e_k(t) = y_k(t) - \hat{y}_k(t) \tag{3}$$

with $y_k(t)$ being the actual output from the system while $\hat{y}_k(t)$ is the predicted output.

3. Methodology

The research methodology implemented is called the Integration of the KGM into a system for analysing transformer data received through DGA. The conditions that are outlined in Table 2 have served as the organising principle for this data. These conditions are determined by performing the calculation known as the TDCG, which involves summing the various gas concentrations that are presented in Table 3. After then, the TDCG is used to establish the conditions that the data should be structured according to, and it does this by using the data itself. Following this step, the values that were derived from the TDCG are utilised in the sorting process for the data.

The TDCG limit concentration that was discovered in Table 3 was utilised as a point of reference to classify the collected data into one of four separate categories. The label "Condition 1" refers to a transformer that meets all standards and does not include any errors. The term "Condition 2" refers to a state that is acceptable despite the presence of some minor faults and can still be utilised, despite the fact that there are a few of these concerns. The item is in a poor state, and problems have been found that need to be fixed or maintained within the next six months. This condition is denoted by the designation "Condition 3." Last but not least, "Condition 4" refers to an urgent scenario in which serious defects need to be quickly fixed within the next three months or as soon as possible.

Table 2
Gasses involved in KGM.

Type of Gas	Formula
Hydrogen	H ₂
Methane	CH ₄
Acetylene	C ₂ H ₂
Ethylene	C ₂ H ₄
Ethane	C ₂ H ₆
Carbon Monoxide	CO
Carbon Dioxide	CO ₂

Table 3
Limit assigned as input.

TDCG Limit	Condition
720	1
721-1920	2
1921-4630	3
>4630	4

As its input, a HMLP network uses the data that is supplied by the transmission and distribution corporation, also known as the TNB. Neurons that are connected to one another and have weights and biases that have been predetermined make up the HMLP network.

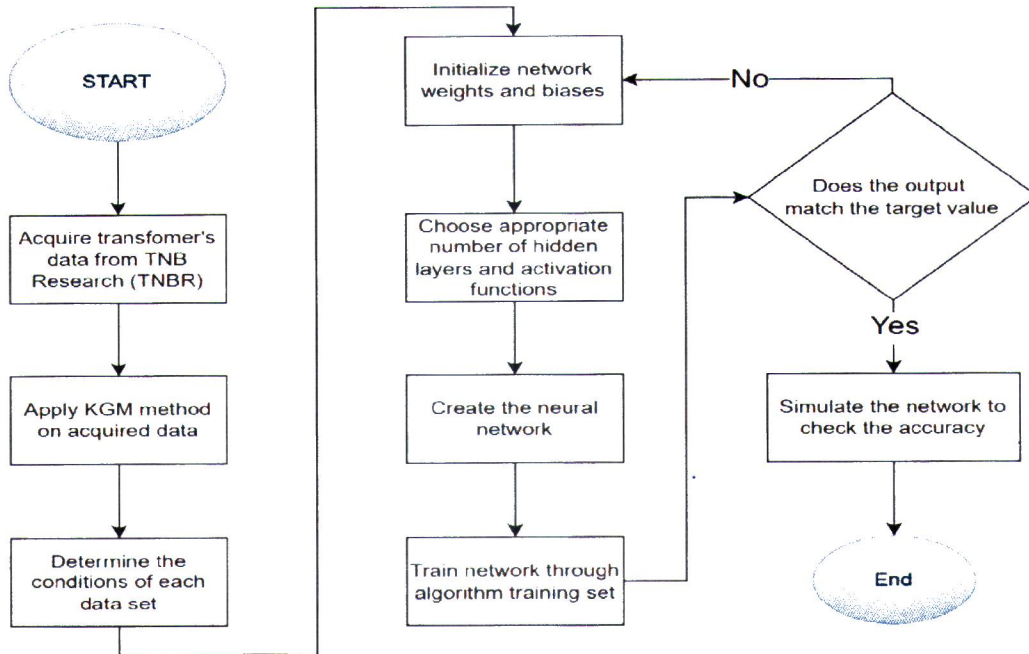


Fig. 5. MLP application to assess health index using ANN.

It is determined how many hidden layers there are, in addition to the activation strategies that should be utilised. Several distinct approaches, including Backpropagation (BP) [21], Bayesian Regularisation (BR) [22], and Levenberg-Marquardt (LM) [23], are applied in the process of training the model. Simulations are run to ensure that the findings can be trusted, and this helps ensure that they are accurate. Research flow chart for this project is depicted as follow in Fig. 5. The data transmission process that takes place inside a HMLP network is referred to as "feedforward." This occurs as information goes from the input layer to the output layer. This is the term that is utilised when referring to the procedure that is being carried out. Depending on the implementation, an MLP may have one or more layers between its input and output layers. This number of levels might vary depending on the model design.

MSE is a metric that examines the average squared difference between the target values that are created in the training samples and the output values that are predicted by an ANN. The Mean Squared Error (MSE) is another name for the term. If the MSE values go down, this suggests that the accuracy of the forecast is getting better. The performance of neural networks now can be accurately characterised as trustworthy and consistent. The accuracy of the detection data can be assessed by taking the number of data instances that have been correctly detected and dividing that number by the total number of data instances that belong to the class. This gives the percentage of data instances that have been correctly detected. The MSE is calculated by multiplying the difference between the identified output data and the actual output data by a factor of four. The method that is used to calculate the average deviation of each data set involves putting up the squared differences that were discovered in the previous phase

$$MSE = \frac{(\sum_{n=1} (y(t) - \hat{y}(t))^2)}{n} \tag{5}$$

with $y(t)$ is the output forecast data while the $\hat{y}(t)$ actual output data and n is the number of data used. This assessment is based on the model's capacity to attain the highest possible level of prediction accuracy while simultaneously minimising the MSE.

4. Results and Discussions

The KGM is going to be implemented, and the goal of this study is to figure out how to achieve it in the most effective way possible. This study's objective is to assess and compare the efficacy of a variety of training algorithms in relation to the morphology of the parameters that are taken into consideration. For evaluating the effectiveness of the network, metrics like accuracy and MSE are utilised. Additionally, other methods for diagnosing DGA will be researched as part of this research. The expected output values are shown in Table 4 as a percentage of the accuracy and MSE of several classifier such as KNN, LDA, MLP and SVM.

Table 4
 The performance of several classifier

Classifier	Accuracy	MSE
KNN	88.32%	0.89
HMLP	92.53 %	0.78
MLP	90.67%	0.92
LDA	72.82%	0.93
SVM	86.42%	0.87

A comparison of the effectiveness of various classifiers in one task is shown in Table 4. Given its accuracy of 90.76% and MSE of 0.92, the MLP classifier performs better than the others, according to the data. Comparing the MLP classifier to the other classifiers assessed in the study, it performs better in terms of accuracy and MSE. However, with additional linear connection between input layer and output layer may gain better performance with 92.53% of accuracy and 0.78 of MSE. The performance is improved better than conventional MLP network. KNN and SVM classifiers come in second and third place, respectively, after MLP. KNN is 86.32% accurate and has an MSE of 0.89, while SVM is 86.42% accurate and has an MSE of 0.87. However, with an accuracy of just 72.82% and an MSE of 0.73, the LDA classifier appears to perform worse than the other classifiers. It appears that the LDA classifier might not be a good fit for the task that is being assessed in this study.

The findings in Table 4 offer insightful information on the advantages and disadvantages of various classifiers in relation to the specified task. Based on its high accuracy and low MSE, the HMLP classifier comes out as the best solution for this classification task, making it a viable alternative. The HMLP classifier has been chosen for more analysis due to its higher performance in Table 4. Three alternative algorithms such as BP, LM and BR training algorithm have been employed to train the HMLP. As illustrated in Table 5, each training algorithm may produce different prediction outcomes. The results of using the three training procedures with the HMLP classifier are probably shown in Table 5, along with the related prediction outputs. Accuracy, MSE or other performance indicators used for evaluation could be the outcome of the prediction. Because different training algorithms have varied optimisation strategies, convergence behaviours, and capacities to handle complicated data patterns, variances in prediction results are to be expected. While LM and BR are sophisticated

optimisation approaches renowned for effectively handling non-linear and ill-conditioned problems, BP is a well-known and commonly utilised algorithm.

Table 5
The performance of MLP with different training algorithm

Training algorithm	Accuracy	MSE
BP	81.28%	0.62
BR	94.13%	0.39
LM	92.98%	0.71

The performance of several training techniques used to train the HMLP network is provide in Table 5. What stands out in this table is the Bayesian Regularisation (BR) algorithm performs best, with a 94.13% accuracy prediction and an MSE of 0.39. BR outperforms the other training methods assessed in terms of prediction accuracy and has a lower MSE. The accuracy and MSE of the LM algorithm, which ranks second to BR in performance, are 92.98% and 0.71, respectively. Despite slightly worse performance than BR, LM still offers competitive accuracy and MSE values. The BP algorithm, in contrast, seems to perform worse than BR and LM. Only 81.28% accuracy and an MSE of 0.62 are achieved by BP. Lower prediction accuracy and greater MSE appear to be the results of BP maybe not being suitable for the job or dataset being examined. The BR algorithm comes out as the best option for training the MLP network based on the findings in Table 5, having the highest accuracy and lowest MSE. The performance of the MLP classifier is greatly influenced by the choice of the training method, and these findings imply that BR is more appropriate for the task at hand than LM and BP.

5. Conclusions

The aim of the study is to evaluate the accuracy, generalizability, and reliability of classifiers in predicting power transformer health indices. Understanding how these networks operate enables the development of more accurate and trustworthy methods for determining the health of transformers, which results in better maintenance strategies, enhanced dependability, and better performance of power systems. This research suggests a unique DGA method that would increase the diagnosis accuracy of transformer failures by utilising an MLP network classifier. This method applies the MLP network performance for the health index of the power transformer. The six main flammable dissolved gas concentrations used as an input to the classifier to determine the transformer failure type were hydrogen, ethane, methane, carbon monoxide, ethylene, and acetylene. The KNN, MLP, LDA, and SVM classifiers have already been used to train the data. The ppm and percentage concentrations of five dissolved gases were calculated. The MLP neural network trained using the BR training technique has the highest percentage, scoring BR 94.13% on accuracy and 0.39 on MSE, respectively.

Acknowledgement

This research is fully supported by FRGS grant, FRGS/1/2020/TK0/UPNM/02/1. The authors fully acknowledged the Ministry of Higher Education (MOHE) and National Defence University of Malaysia (UPNM) for the approved fund, making this important research viable and effective.

References

- [1] M. Wang, A. J. Vandermaar, and K. D. Srivastava, "Review of Condition Assessment of Power Transformers in Service," *IEEE Electrical Insulation Magazine*, vol. 18, no. 6, pp. 12–25, 2002, doi: <https://doi.org/10.1109/MEI.2002.1161455>.
- [2] Abu-Elanien, Ahmed EB, and M. M. A. Salama. "Asset management techniques for transformers." *Electric power systems research* 80, no. 4 (2010): 456-464. <https://doi.org/10.1016/j.epsr.2009.10.008>
- [3] Illias, Hazlee Azil, and Wee Zhao Liang. "Identification of transformer fault based on dissolved gas analysis using hybrid support vector machine-modified evolutionary particle swarm optimisation." *PLoS One* 13, no. 1 (2018): e0191366. <https://doi.org/10.1371/journal.pone.0191366>.
- [4] Alqudsi, Alhaytham Y., and Ayman H. ElHag. "A cost effective artificial intelligence based transformer insulation health index." In *2017 3rd International Conference on Condition Assessment Techniques in Electrical Systems (CATCON)*, pp. 108-111. IEEE, 2017. <https://doi.org/10.1109/CATCON.2017.8280194>
- [5] Tenbohlen, S., C. P. Beura, and M. Siegel. "Condition Assessment of Power Transformers by UHF PD Measurements." In *2022 9th International Conference on Condition Monitoring and Diagnosis (CMD)*, pp. 5-10. IEEE, 2022. <https://doi.org/10.23919/CMD54214.2022.9991308>
- [6] Kadim, Emran Jawad, Norhafiz Azis, Jasronita Jasni, Siti Anom Ahmad, and Mohd Aizam Talib. "Transformers health index assessment based on neural-fuzzy network." *Energies* 11, no. 4 (2018): 710. <https://doi:10.3390/en11040710>.
- [7] Rediansyah, Dhanu, Rahman Azis Prasojo, and A. Abu-Siada. "Artificial intelligence-based power transformer health index for handling data uncertainty." *IEEE Access* 9 (2021): 150637-150648. <https://doi:10.1109/ACCESS.2021.3125379>.
- [8] Aizpurua, Jose Ignacio, Brian G. Stewart, Stephen DJ McArthur, Brandon Lambert, James G. Cross, and Victoria M. Catterson. "Improved power transformer condition monitoring under uncertainty through soft computing and probabilistic health index." *Applied Soft Computing* 85 (2019): 105530. <https://doi:10.1016/j.asoc.2019.105530>.
- [9] Xing, Zhikai, Yigang He, Jianfei Chen, Xiao Wang, and Bolun Du. "Health evaluation of power transformer using deep learning neural network." *Electric Power Systems Research* 215 (2023): 109016. <https://doi.org/10.1016/j.epsr.2022.109016>
- [10] IEEE Standard C57. 104. "Guide For The Interpretation Of Gases Generated In Mineral Oil-Immersed Transformers." (2019). <https://doi:10.1109/IEEESTD.2019.8890040>.
- [11] Guo, Hong, and Lei Guo. "Health index for power transformer condition assessment based on operation history and test data." *Energy Reports* 8 (2022): 9038-9045. <https://doi:10.1016/j.egy.2022.07.041>.
- [12] Shamsudin, M. Solehin, Fitri Yakub, M. Ibrahim Shapiai, Azlan Mohmad, and N. Amirah Abd Hamid. "Investigation on Online DGA Monitoring to Determine Transformer Health Index Using Machine Learning." In *Journal of Physics: Conference Series*, vol. 2128, no. 1, p. 012024. IOP Publishing, 2021. <https://doi:10.1088/1742-6596/2128/1/012024>.
- [13] A. Abu-Siada, M. Arshad, and S. Islam, "Fuzzy logic approach to identify transformer criticality using dissolved gas analysis," in *PES General Meeting, IEEE, 2010*, pp. 1–5. <https://doi.org/10.1109/PES.2010.5589789>
- [14] Sun, Lingjie, Yingyi Liu, Boyang Zhang, Yuwei Shang, Haiwen Yuan, and Zhao Ma. "An integrated decision-making model for transformer condition assessment using game theory and modified evidence combination extended by D numbers." *Energies* 9, no. 9 (2016): 697. <https://doi:10.3390/en9090697>.
- [15] Salim, Nur Ashida, Jasronita Jasni, Hasmainsi Mohamad, and Zuhaila Mat Yasin. "Transformer health index prediction using feedforward neural network according to scoring and ranking method." *International Journal of Advanced Technology and Engineering Exploration* 8, no. 75 (2021): 292. <https://doi:10.19101/IJATEE.2020.762125>.
- [16] Al Mhdawi, Ammar K., and Hamed Saffa Al-Raweshidy. "A smart optimization of fault diagnosis in electrical grid using distributed software-defined IoT system." *IEEE Systems Journal* 14, no. 2 (2019): 2780-2790. <https://doi.org/10.1109/JSYST.2019.2921867>
- [17] Jamil, Syahrull Hi-Fi Syam Ahmad, Jailani Abdul Kadir, Fakroul Ridzuan Hashim, Baharuddin Mustapha, Nor Sham Hasan, and Yulni Januar. "Optimization of ecg peaks for cardiac abnormality detection using multilayer perceptron." In *2020 10th IEEE International Conference on Control System, Computing and Engineering (ICCSCE)*, pp. 169-173. IEEE, 2020. <https://doi.org/10.1109/ICCSCE54767.2022.9935642>
- [18] Abu-Elanien, Ahmed EB, M. M. A. Salama, and Malak Ibrahim. "Determination of transformer health condition using artificial neural networks." In *2011 International Symposium on Innovations in Intelligent Systems and Applications*, pp. 1-5. IEEE, 2011. <https://doi.org/10.1109/INISTA.2011.5946173>
- [19] Hashim, Fakroul Ridzuan, Syahrull Hi-Fi Syam Ahmad Jamil, Jailani Abdul Kadir, Nor Sham Hasan, Baharuddin Mustapha, and Yulni Januar. "Tansig Based MLP Network Cardiac Abnormality." In *2019 9th IEEE International Conference on Control System, Computing and Engineering (ICCSCE)*, pp. 199-203. IEEE, 2019. <https://doi.org/10.1109/ICCSCE47578.2019.9068588>

- [20] Behkam, Reza, Hossein Karami, Mehdi Salay Naderi, and G. B. Gharehpetian. "Intelligent Interpretation of Frequency Response Signatures to Diagnose Radial Deformation in Transformer Windings Using Artificial Neural Network." In 2022 12th International Conference on Computer and Knowledge Engineering (ICCKE), pp. 523-528. IEEE, 2022. <https://doi:10.1109/ICCKE57176.2022.9960001>
- [21] Jamil, Addzrul Hi-Fi Syam Ahmad, Jailani Abdul Kadir, Johanis Mohd Jamil, Fakroul Ridzuan Hashim, Shazreen Shahrudin, and Nazrul Fariq Makmor. "Multilayer Perceptron Optimization of ECG Peaks for Cardiac Abnormality Detection." In 2022 IEEE 12th International Conference on Control System, Computing and Engineering (ICCSC), pp. 37-41. IEEE, 2022. <https://doi.org/10.1109/ICCSC54767.2022.9935642>
- [22] Jamil, Syahrull Hi-Fi Syam Ahmad, Abdul Rashid Alias, Mohamad Taufik A. Rahman, Fakroul Ridzuan Hashim, Shazreen Shahrudin, and Mohd Salman Mohd Sabri. "Cardiac Abnormality Prediction using Logsig-Based MLP Network." In 2022 IEEE 12th International Conference on Control System, Computing and Engineering (ICCSC), pp. 42-46. IEEE, 2022. <https://doi.org/10.1109/ICCSC54767.2022.9935583>
- [23] Adnan, J., N. G. Daud, S. Ahmad, M. H. Mat, M. T. Ishak, F. R. Hashim, and M. M. Ibrahim. "Heart abnormality activity detection using multilayer perceptron (MLP) network." In AIP Conference Proceedings, vol. 2016, no. 1. AIP Publishing, 2018. <https://doi.org/10.1063/1.5055415>